

ASS_SAP™ PLM

Get closer to your customers



Situation and Challenge

PLM (Product Lifecycle Management) symbolizes the combination of technical and business management product information. Its aim is to process this information without media breaks and information losses throughout the whole enterprise from the creation of a product, development and manufacturing to acquisition, sale, service and across enterprise boundaries.

As ERP standardization and optimization have now reached a certain level even in midsized enterprises, manufacturing enterprises will be focusing intensely on product lifecycle management in the next years.

Several PLM projects revealed that up to 30 percent time can be saved throughout the value-added chain.

According to your request for perfect solutions for SAP® users, ASS.TEC supports its customers also as system integrator to find a solution for horizontal integration tasks.

ASS.TEC offers this support on the basis of SAP® certified CAD interfaces, regardless whether the competition asset of an enterprise caused by the introduction of PLM is rooted in product development, or production and downstream steps.

Appropriate relations to CAD or interface manufacturers/providers, methodical competence and long-time experience from ERP integration projects secure the success of a project.

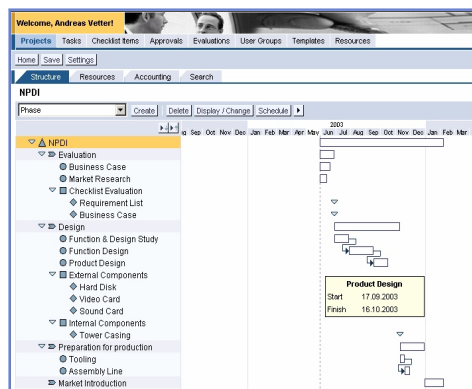
In the varied field of PLM ASS.TEC focuses on Lifecycle Data Management and Design Collaboration

This includes project support from the idea to its development, construction and production.

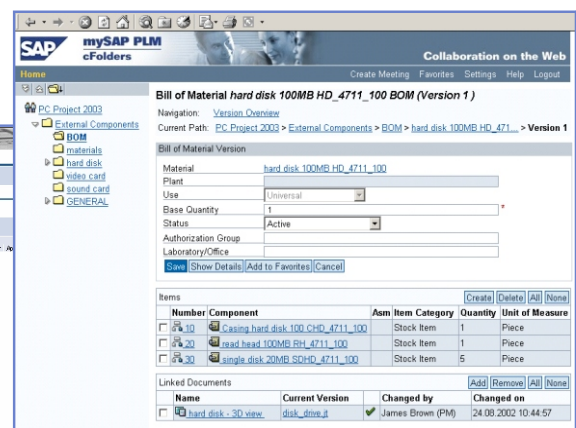
Lifecycle Collaboration with cProject Suite

cProject Suite consists of two web-based applications:

cProjects for Project Management



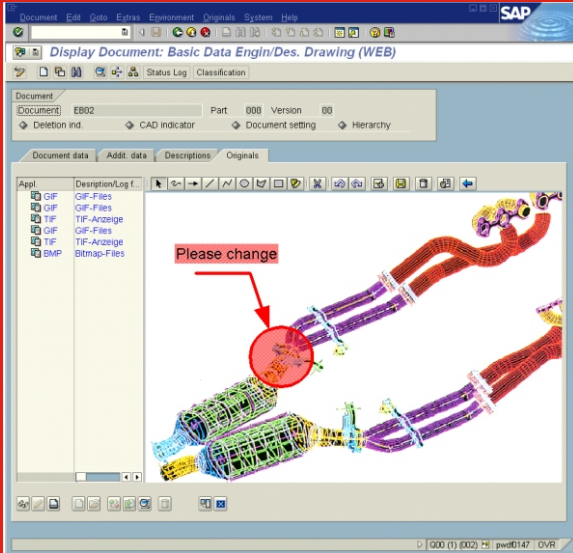
cFolders for design collaboration



Growth fuelled by success.
Success fuelled by growth.
A safe future.

ASS_SAP™ PLM

Get closer to your customers

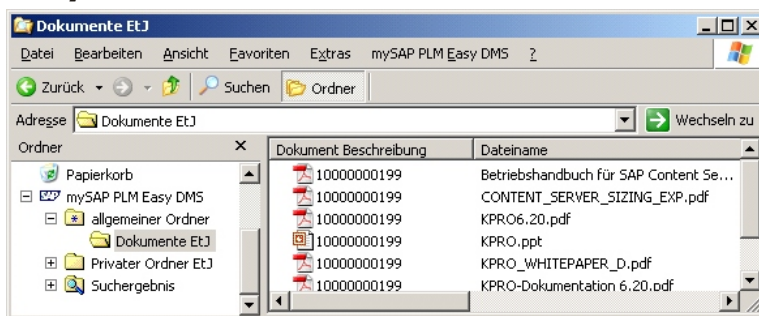


Lifecycle Data Management

Document Management

The Document Management tool integrated in SAP® R/3® enables linking documents to R/3® objects. The Version Management tool facilitates change tracking. Classification makes it easy to find specific documents. Different folder systems relieve the network and safeguard against data losses and data misuse. Status management guarantees that only released documents can be used for manufacturing. Status-dependent Workflow helps project managers to keep ahead of all changes and to keep in control of the product. Integrated viewers, Office integration and Redlining give all enterprise employees the necessary information.

Easy-DMS



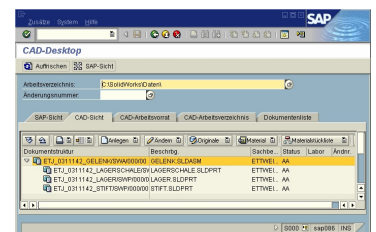
Work with an Explorer structure. Create documents and have them checked-in automatically. Searching for documents, displaying and changing them, inserting the original version with drag&drop and the integration of Office are the key elements of EasyDMS.

CAD Interface

Interfaces to all leading CAD programs available. Material masters and object lists are transferred from the CAD system to SAP® R/3®. This helps integrating development and construction into the ERP system and reduces redundant pieces of data and information. The CAD interface is available on the SAP® price list for: AutoCAD, Inventor, Pro/Engineer, Catia, Unigraphics, IDEAS, Solid Edge, Solid Works.

CAD-Desktop

CAD Desktop is a user interface within SAP™ PLM, combining all functions and views of the product and its structure that the constructor needs, displaying them clearly arranged.



ASS.TEC Consulting Company for Applications, Systems, Strategies and Technologies
In the IT service center VS
Eichendorffstr. 33, 78054 Schweningen, Germany
Phone/Fax: +49 (0) 7720-840-140/-139
www.asstec.com - consulting@asstec.com